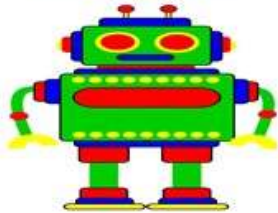


The Judge and The Robot

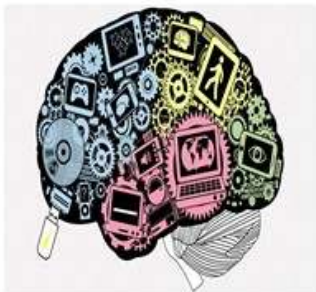
We will use a metaphor to describe two parts of the mind. The conscious mind or awareness will be 'The Judge' and the subconscious part we will call 'The Robot'. It is important to understand the function and the role each. Mostly, The Judge rules over The Robot when it comes to right and wrong or good and bad.



The role of The Judge (conscious level), is to apply logic to information. The function of the Judge is to engage in rational thought, to determine what is right and what is wrong. The Judge serves as a filter for things that do not belong or that do not fit. The Judge can accept or reject. Information from 'The Judge' goes into the Robot for storage and future use when the experiences are similar.



The role of The Robot, (subconscious level) is to store information. Information that we store is from experience and exposure. The Robot cannot distinguish between right and wrong or fantasy from reality. The Robot deals with outcomes from experiences. Once something is put into The Robot it cannot be removed.



It is important to know that you can overwrite wrong or harmful information. Overwriting wrong or damaging information in "The Robot" is like replacing old tapes with a new one. The choice is yours!

Questions or Comments?

www.yeldfacilitator.com